



Contents:

- Letter from our Principal
- Hilltop School Charter
- Important Notes for Applicants

HILLTOP SCHOOL

Courageous Learners
Striving for Excellence



**SCALE A
FIXED TERM**

**APPLICATION
INFORMATION**

@HHP : FCA 'C I F 'DF ß 7 ð5 @Æ

Æ

8YUf5dd]WUbhÆ

H\Ub_Ærc i Æc fÆrc i fÆbhY fY ghÆbÆdd ðm]b [Æc fÆ\YÆWU'YÆ ðÆ] YXÆY fa Æc g]hc bgÆhÆ]hc dÆWÆcc "Æ\]gÆ d c g]hc bÆgÆj]hY XÆc h\c gYÆ \cÆ Uj YÆUÆd Uggc bÆc fÆY UWÆ]b ["Æ5 bÆU V]]mÆcÆ YÆWc [b]gYÆ\YÆ UbmÆ UbXÆ UfY XÆY Y XgÆgd]fUhc bgÆbXÆghY b [h\gÆ ZÆi fÆ_c b [UÆgÆW bhU'ÆcÆ\YÆc "YÆMc i Æ]Æc ggY ggÆ gfc b [ÆY X U [c []WUÆU bXÆW ff]W i a ÆWc bhY bhÆbck 'YX [YÆ \]YÆ/Y]b [ÆWc a a]hY XÆcÆ\c bh]bi Y XÆ gY'Z fY j]Yk 'UbX 'd fc ZY gg]c bU "Y U fb]b ["Æ

Æ

ZÆrc i Æ ci 'XÆ_YÆcÆdd ðmÆc fÆ\]gÆc g]hc bZÆ 'Y U gYÆ]ÆbÆ\YÆ cc ['YÆ dd]WUhc bÆc fa Æ\UhÆrc i ÆU bÆ Xck b'c UXÆc a Æ\YÆXi WUhc bÆ UnY hY "Æc i ÆU bÆd 'c UXÆrc i fÆ J zÆc j Y f]b [ÆY hY fÆc i h]b]b [ÆbXÆ XY gM]V]b [Ærc i fÆj]hUV]]mÆc fÆ\]gÆc g]hc bÆU bXÆU b mÆY Y j UbhÆXi WUhc bUÆ i U]Z]WUhc bgÆhÆ\YÆ Y bX'c Z hY ; cc ['Y : cfa "Æ

Æ

5dd]WUhc bgÆVc gY Æ\Y X b Y g X U m % h \ B c j Y a V Y f U h k " \$ \$ d a "ÆG\c fh]ghY XÆdd]WUbhgÆ]ÆYÆc h]Z]Y XÆ VmÆU hY Æh i fgXUmÆZ hY fbc c bÆh i fgXUmÆ h\ÆBcj Ya VY fÆÆ ZÆ\c fh]ghY XÆbhY fj]Yk gÆ]ÆU_YÆd 'UWYÆ c bg]hY Æc bÆ c b X U m % h \ U b X Æ h Y g X U m % h \ B c j Y a V Y f 'Æh YÆ5 ddc]bha YbhgÆ ca a]hY YÆ]Æ U_YÆ h\Y]fXY W]c b'Vm: f]XUm% h \ B c j Y a V Y f 'U h k \]W h j a Y 'h Y 'g W W Y ggZ "Udd]WUbhk]"VY 'bch]Z]Y XÆÆ

5Æk f]hY bÆWc bZ]fa Uhc bÆc ZÆh YÆg W W Y ggZ 'ÆUdd]WUbhgÆU W W Y d h U b W Y Æc fÆh YÆd c g]hc bÆg\ci 'XÆYÆ g Va]hY X'hc a Y V m H Y g X U m % h \ B c j Y a V Y f 'ÆÆ

Æ

ZÆrc i Æ Y Y XÆWU f]Z]WUhc bÆU V ci hÆ\YÆd fc W Y ggZÆ fÆ\YÆd c g]hc bZÆ 'Y U gY Æc Æc hÆ Y ghU hY Æc Æ\c bhU W h a Y "Æ

Æ

K Ufa 'fY [UfXgZÆ

Æ

Æ

5 b X f Y U ' < i b h Y fÆ

Df]bW]d UÆ

Æ

Æ

Strategic Vision



Our strategic goals have Hilltop School students at the heart of every decision we make. Our values of responsibility/kawenga, kindness/aroha, respect/whakaute and integrity/mana are embedded in our school culture.

Our whole school community will be actively engaged in all that happens at Hilltop School and everyone involved in the school will feel welcome and safe.

We work in partnership with our wider community to ensure high quality learning and well-being are at the forefront of everything we do. Learners are encouraged to participate in a wide range of opportunities and there are clear pathways for life-long learning.

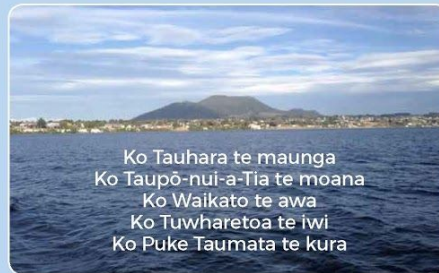
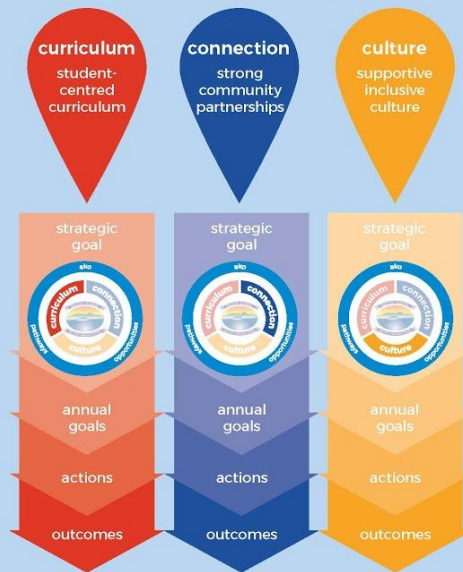
When developing policies and practices, every endeavour is made to reflect New Zealand's cultural diversity and the unique position of the Māori culture. We recognise te reo Māori is unique to New Zealand, and all reasonable steps are taken to provide instruction in te reo Māori to all students at Hilltop School. Our Māori Implementation Plan scaffolds learning te reo Māori and tikanga. We are committed to working with our Tuwharetoa Iwi to impart Tuwharetoa Cultural Knowledge at Hilltop School.

new beginnings

He aha te mea nui o te ao
 What is the most important thing in the world?
 He tāngata, he tāngata, he tāngata
 It is people, it is people, it is people
 MAORI PROVERB

Strategic Process

OUR VISION: succeed through effort



Te Kura o Puke Taumata



Strategic Plan 2020-2022



curriculum



student-centred curriculum

Achieving a rich and balanced curriculum. Hilltop School is focused on consistently raising student achievement through teaching and learning programmes that engage all learners. All students/akonga will be empowered to achieve personal success.

Strategic Goal	All our students/akonga will progress and achieve to their highest possible educational potential through quality teaching and learning, safe environments and positive relationships.		
Focus Areas	Mathematics	Writing	Digital Technologies
Annual Goals	Inspire and challenge our learners so that they see themselves as capable mathematicians who experience individual success.	Build coherent pathways for learning within and across levels so that learners achieve success in writing.	Ensure that all learners have the opportunity to become digitally capable individuals.
Actions	Developing Mathematical Inquiry Communities DMIC - Approach / Practice	Hilltop Writing Expectations WTE - Write That Essay	Digital Technologies Progressions/Practice

connection



strong community partnerships

Relationships with our community are valued. Working together as a school and community supports learners and learning. Our community knows what is happening with their child's learning and what is happening in and around the school. We know our learners and their cultural backgrounds.

Strategic Goal	Develop strong partnerships with parents, whanau and the wider community.
Focus Areas	Partnerships – Kotahitanga – Unity
Annual Goal	Refine methods of communication between school and parents, carers and whanau.
Actions	Reporting - Information Sharing - Consultation

culture



supportive inclusive culture

We have a supportive, inclusive culture that provides our community with a strong sense of safety (murutau) and belonging (whanaungatanga) which enables our students to respond positively when faced with challenges.

Strategic Goal	All learners (akonga) approach new learning with a growth mindset and have a strong sense of identity.
Focus Areas	Whanaungatanga - Belonging - Akoranga - Learning
Annual Goal	Create a culture which promotes the safety and well-being of all akonga (learners) where all students experience success.
Actions	Embed Culturally Responsive Practices (Kahui Ako) - Restorative Practice - Tuwharetoa Cultural Knowledge

